

---

## USB 2.0 Storage Internal Hard Drive Installation



## Procedure Instructions Manual Contents

### I. Unwrapping the USB 2.0 Storage

### II. Installing the Hard Drive

### III. Setting Up the USB 2.0 Storage



### I. Unwrapping the USB 2.0 Storage

Please note the following when installing the USB 2.0 Storage Internal Hard Drive:



1. Do not subject the hard drive to excessive shocks, which may result in damage to its internal components.
2. Place a soft cloth on a flat surface before beginning installation, to prevent the exterior from being scratched.
3. Have a large and a small Philips head screwdriver ready.

**Step 1:** Remove the four screws from the back of the USB 2.0 Storage hard drive.

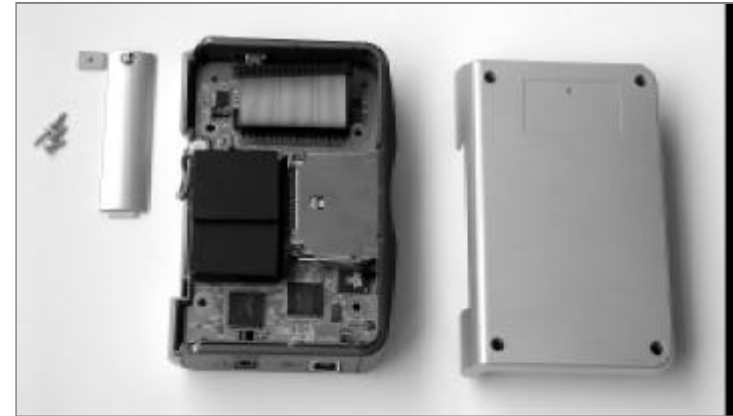


**Step 2:** Remove the one screw from the side of the USB 2.0 Storage.

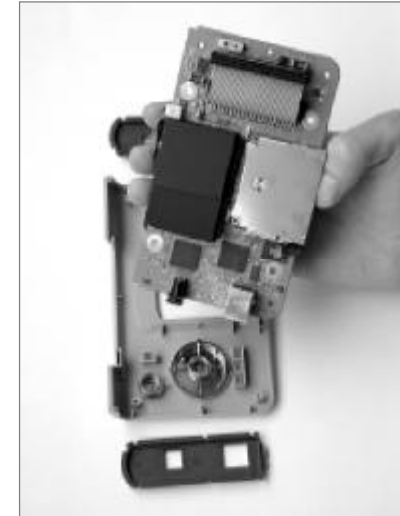


**(Note:** At this time, all external placement screws have been loosened. Make sure you hold the case in place to ensure case components do not fall out.)

**Step 3:** Carefully place the USB 2.0 Storage on the table.



**Step 4:** Remove the PCB from inside the USB 2.0 Storage to allow the hard disk to be fixed to the PCB.



**Step 5:** After removing the PCB, assemble the USB 2.0 Storage components as follows:



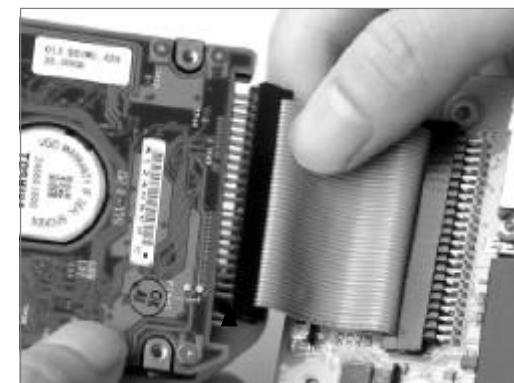
## II. Installing the Hard Drive

**Step 1:** Prepare to install the 2.5x hard disk drive, and remove the parts from the component bag (four copper posts and four long screws).



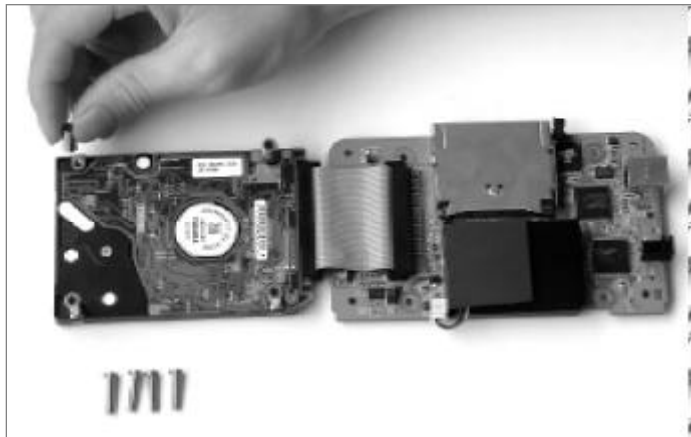
**Step 2:** Align the pins on the back of the disk drive with the cable connected to the PCB and connect.

**(Note:** When connecting the hard disk, make sure the pin marked <Pin 1> is aligned with the red stripe on the connecting cable. If the cable is not properly connected, the hard disk may be damaged when the power is turned on.)

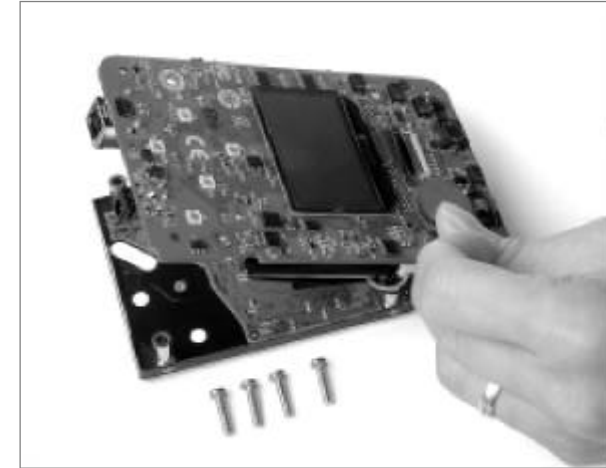


**(Note:** If your hard disk is not marked with <Pin 1> or a similar marking, align the red stripe on the connecting cable with the first pin on the long row of pins (pin 1).)

**Step 3:** Once the hard disk is installed, affix the hard disk to the PCB. First, attach the four copper posts to the screw holes at the corners of the hard disk.



**Step 4:** Place the hard disk on the table, then slowly move the right side of the PCB to the left until it is aligned with the hard drive, and place on top of the hard drive, making sure the four screw holes in the PCB are aligned with the four copper posts attached to the hard drive.



**Step 5:** Remove the long screws from the component bag, and insert them into the four screw holes on the PCB (**Note:** screw holes must be properly aligned with the copper posts on the hard drive for the screws to be tightened completely). Tighten the screws to firmly mount the hard drive.



### III. Installing the USB 2.0 Storage

Next, remove the USB 2.0 Storage parts from the components bag. You will now assemble the fixed hard drive and the PCB components.

**Step 1:** Place the front cover flat on the table. Affix the button to the top of the front cover (direction of the button does not matter). Then place the spring on top of the button.



**Step 2:** Place the fixed hard drive and connecting cable.

(Note: On the top and bottom of the inside of the case, there are two plastic protruding points. These points must be aligned so that they fit into the two holes on the top and bottom of the PCB.)



Plastic protruding points

**Step 3:** Affix the two sides of the USB 2.0 Storage base board power button with the case.

(**Note:** When affixing the power supply and power button with the case, take special care to ensure the power button is properly inserted with relation to the PCB. Otherwise, when the case is in place the power button will not connect properly with the power switch on the PCB, and you will not be able to turn the unit on or off.)



Affixing the power supply and power button



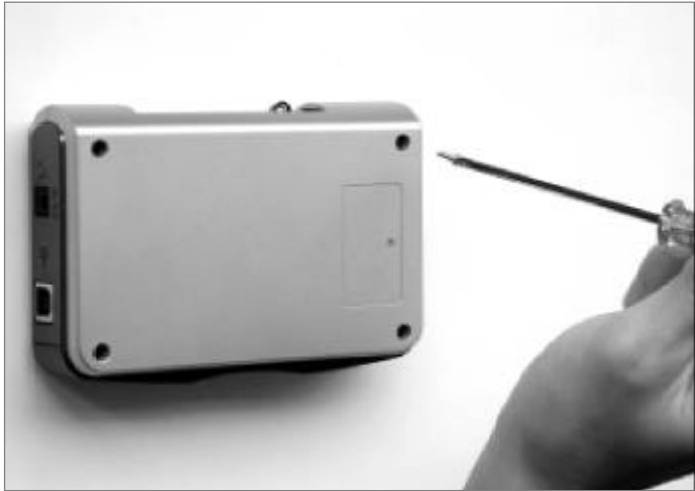
**Step 4:** Insert CF into aperture on side of case.



**Step 5:** Insert battery cover copper plate; PCB power button must be inserted properly.



**Step 6:** Reinsert the four screws from the back panel to replace the back panel.



**Step 7:** Finally, fix the battery cover and tighten the placement screws.



**Step 8:** Installation is complete.

